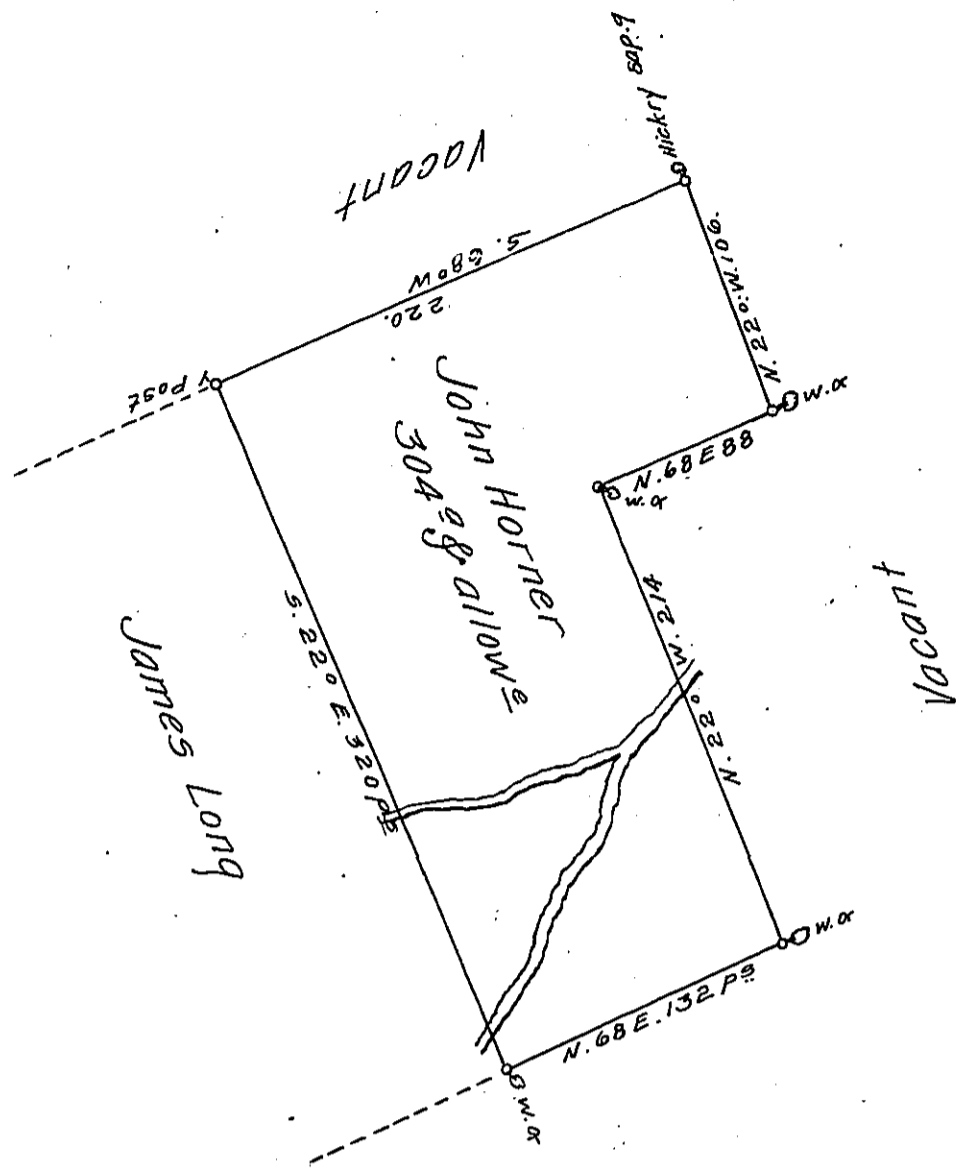


X



A Draught of a Tract of Land Called— Situate On the Southerly side of the North East Branch of Susquehanna River near land Surveyed to Daniel Grant on the Waters of Little Waphallapane in the County of Northumberland. Containing Three hundred and four Acres besides the Usual allowance of Six & Cent for Roads &<sup>th</sup>. Surveyed the 11<sup>th</sup> Day of April 1774 for John Horner. In Pursuance of a Warrant Dated the 28<sup>th</sup> Day of January 1774.

by

Cha<sup>s</sup> Stewart, D<sup>y</sup> Sur<sup>r</sup>

To

John Lukens Esq<sup>r</sup> Survey<sup>r</sup> Gen<sup>l</sup>

176  
220  
396

IN TESTIMONY that the above is a copy of the original remaining on file in the Department of Internal Affairs of Pennsylvania, made conformably to an Act of Assembly approved the 16th day of February, 1833, I have hereunto set my Hand and caused the Seal of said Department to be affixed at Harrisburg, this eighth day of May 1911.

*Henry Howell*  
Secretary of Internal Affairs.